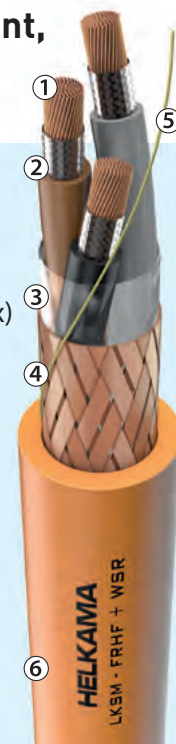


LKSM-FRHF+WSR/WJR

Fire Resistant + Water Spray Resistant and/or Water Jet Resistant, armoured power and control cable 0,6/1kV

Cable types: LKSM-FRHF+WSR (diameter ≤ 20 mm)
LKSM-FRHF+WJR (diameter > 20 mm)

DESIGN:	STANDARDS: IEC 60092-353, design
1. Conductor	- stranded copper conductor 1,0–10 mm ² IEC 60228, class 2 - stranded copper conductor 16–300 mm ² IEC 60228, class 5 (Flex) - tinned stranded copper conductor on request ("CuSn")
2. Insulation	- special grade Mica tape(s) - XLPE plastic IEC 60092-360
3. Cabling / Bedding	- cabling with optional fillers or dummy cores to obtain symmetrical and round construction - separator tape
4. Armour	- copper wire braid, coverage > 90% IEC 60092-350 - tinned copper wire braid on request
5. Rip cord	- rip cord for conductors from 16mm ²
6. Sheath	- polyolefine plastic, SHF1, standard colour orange IEC 60092-360 - on request oil resistant thermosetting, black polyolefine, SHF2 - other colours on request



● Halogen-free ● Flame-retardant ● Low smoke emission ● Fire-resistant ● Water Spray and/or Water Jet Resistant

Application: For fixed installation in most areas and on open deck in ships and offshore units. Especially intended to ensure the availability of all critical transportation-, comfort- and safety systems, i.e. to meet the concepts of; **Orderly Evacuation** (3 hours burning time) and **Safe Return to Port** (Fire test with simultaneous Water Spray / Water Jet + mechanical shocks) to simulate the firefighting conditions.

If the cable is exposed to direct sunlight, we recommend cable with black outer sheath or a protective covering.

Main characteristics

Rated voltage	AC 0,6/1kV (1,2kV) DC 0,9/1,5kV (if voltage to earth does not exceed 0,9kV)
Halogen-free	IEC 60754 series
Flame-retardant	IEC 60332-1-2 -test for single insulated wire and cable IEC 60332-3-22 -test for bunched wires and cables, category A
Smoke emission	IEC 61034 series
Fire- and Water Spray Resistant	IEC 60331-2 (180 min test) + EN 50200:2015 Annex E (diameter ≤ 20 mm)
Fire- and Water Jet Resistant	IEC 60331-1 (180 min test) + BS 8491:2008 (diameter > 20 mm)
Oil resistance (only SHF2)	IEC 60811-404 conditions according to 60092-360/SHF2

Recommended minimum bending radius (fixed installation): 4 x outer diameter of the cable

Temperature rating:	Maximum conductor temperature + 90 °C Fixed installation - 40 °C to + 80 °C Minimum recommended installation temperature - 15 °C
----------------------------	--

For details see general information section

LKSM-FRHF +WSR/WJR 0,6/1kV Part number Normal G-type		Number of conductors & cross-section n x mm ²	Cross- section of armour mm ²	Nominal outer diameter mm	Approximate weight kg/km	Current Rating A at +45°C	Min. bending radius fixed installation mm
628541	–	1x1,0	3,0	6,5	75	18	40
628568	–	1x1,5	3,0	7,0	85	23	40
628570	–	1x2,5	3,1	7,5	95	30	45
628572	–	1x4	3,1	8,0	115	40	50
628574	–	1x6	3,1	8,5	145	52	50
628576	–	1x10	3,5	10,0	205	72	60
629060	627058	1x16 Flex	4,0	11,0	265	94	65
629061	627060	1x25 Flex	4,9	13,0	380	123	80
629062	627062	1x35 Flex	5,5	14,0	480	153	85
629063	627064	1x50 Flex	8,7	16,5	670	196	100
629064	627066	1x70 Flex	10,0	18,5	905	240	110
629065	627068	1x95 Flex	11,5	20,0	1140	284	120
629066	627070	1x120 Flex	12,3	22,5	1415	331	135
629067	627072	1x150 Flex	14,7	25,0	1760	381	150
629068	627074	1x185 Flex	15,2	27,5	2095	429	165
629069	627076	1x240 Flex	18,2	30,5	2725	507	180
629070	627078	1x300 Flex	18,7	34,0	3365	582	205
628542	–	2x1,0	3,5	10,0	155	15	60
628602	–	2x1,5	3,8	11,0	175	20	65
628604	–	2x2,5	4,3	12,0	205	26	70
628606	–	2x4	4,9	13,0	280	34	80
628608	–	2x6	5,4	14,5	405	44	85
628610	–	2x10	8,7	17,0	600	61	100
629071	–	2x16 Flex	10,0	19,5	770	80	115
629072	–	2x25 Flex	14,5	24,0	1215	105	145
629073	–	2x35 Flex	14,7	26,0	1460	130	155
629074	–	2x50 Flex	18,1	30,0	1950	167	180
629075	–	2x70 Flex	18,7	34,0	2645	204	205
629076	–	2x95 Flex	22,2	37,5	3315	241	225
628543	628544	3x1,0	4,1	10,5	155	13	65
628622	628623	3x1,5	4,1	11,5	180	16	70
628624	628625	3x2,5	4,6	12,5	220	21	75
628626	628627	3x4	5,2	14,0	295	28	85
628628	628629	3x6	5,8	15,0	420	36	90
628630	628631	3x10	9,3	18,0	625	50	110
629082	629083	3x16 Flex	10,7	20,5	905	66	125
629084	629085	3x25 Flex	14,6	25,5	1385	86	155
629086	629087	3x35 Flex	15,0	27,5	1710	107	165
629088	629089	3x50 Flex	18,3	32,0	2355	137	195
629090	629091	3x70 Flex	22,0	36,5	3190	168	220
629092	629093	3x95 Flex	22,8	40,5	4025	199	240
629094	629095	3x120 Flex	37,8	45,5	5170	232	270
629096	629097	3x150 Flex	39,3	51,5	6415	267	310
629098	629099	3x185 Flex	43,4	56,5	7770	300	340
629100	629101	3x240 Flex	49,1	63,5	10135	355	380

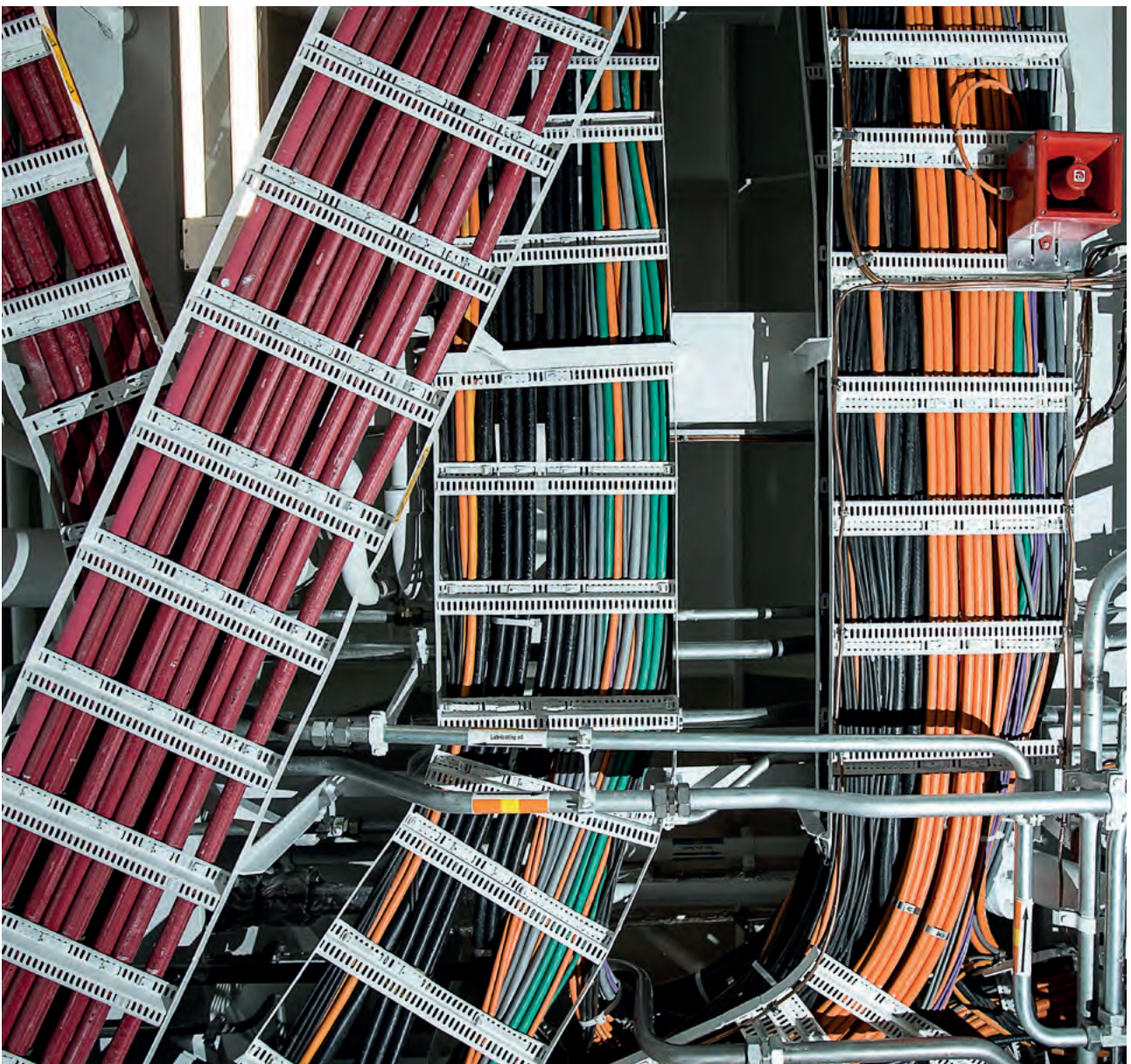
G-type is with yellow/green earth conductor and marking on sheath is, for example, 3G1,5

Part number for oil resistant SHF2 cable:
4 + code from above table → 4xxxxx

Table continues on next page >

LKSM-FRHF +WSR/WJR 0,6/1kV Part number Normal G-type		Number of conductors & cross-section n x mm ²	Cross- section of armour mm ²	Nominal outer diameter mm	Approximate weight kg/km	Current Rating A at +45°C	Min. bending radius fixed installation mm
628545	628546	4x1,0	4,1	11,5	180	13	70
628642	628643	4x1,5	4,5	12,5	215	16	75
628644	628645	4x2,5	5,0	14,0	275	21	85
628646	628647	4x4	5,8	15,0	360	28	90
628648	628649	4x6	8,8	17,0	535	36	100
628650	628651	4x10	10,3	20,0	760	50	120
629104	629105	4x16 Flex	11,9	23,0	1040	66	135
629106	629107	4x25 Flex	14,8	28,5	1550	86	170
629108	629109	4x35 Flex	18,1	30,5	1995	107	185
629110	629111	4x50 Flex	19,5	35,5	2715	137	210
629112	629113	4x70 Flex	22,4	40,5	3690	168	245
629114	629115	4x95 Flex	37,8	45,5	4860	199	270
629116	629117	4x120 Flex	39,3	50,5	6020	232	300
628547	628548	5x1,0	4,5	12,5	210	10	75
628662	628663	5x1,5	5,0	14,0	255	13	85
628664	628665	5x2,5	5,6	15,0	320	17	90
628705	628706	5x4	8,6	17,0	455	23	100
628707	628708	5x6	9,7	18,5	620	30	110
628709	628710	5x10	11,5	21,5	895	42	130
629126	629127	5x16 Flex	13,2	25,0	1230	55	150
629128	629129	5x25 Flex	18,1	31,0	1870	71	185
629130	629131	5x35 Flex	18,6	33,5	2415	89	200
629132	629133	5x50 Flex	21,6	39,0	3325	114	235
628549	628550	7x1,0	4,9	13,5	260	9	80
628551	628552	10x1,0	8,7	17,5	380	8	105
628553	628554	12x1,0	9,0	18,0	425	8	105
628555	628556	14x1,0	11,4	18,5	490	7	110
628557	628558	16x1,0	11,4	20,0	545	7	120
628559	628560	19x1,0	11,4	21,0	605	7	125
628561	628562	24x1,0	12,5	24,5	755	6	145
628563	628564	27x1,0	12,8	25,0	815	6	150
628564	–	30x1,0	13,3	26,0	885	5	155
628565	628566	37x1,0	14,4	28,0	1050	5	170
628666	628667	7x1,5	5,4	15,0	310	12	90
628723	628724	10x1,5	9,6	19,0	460	11	115
628670	628671	12x1,5	9,9	20,0	525	10	120
628727	628728	14x1,5	11,4	21,0	595	10	125
628731	628732	16x1,5	11,5	22,0	650	9	130
628674	628675	19x1,5	11,7	23,0	730	9	135
628678	628679	24x1,5	13,9	27,0	940	8	165
628682	628683	27x1,5	14,1	27,5	1015	8	165
–	–	30x1,5	14,7	28,5	1105	7	170
628684	628685	37x1,5	16,0	31,0	1315	7	185

LKSM-FRHF +WSR/WJR 0,6/1kV Part number Normal G-type		Number of conductors & cross-section n x mm ²	Cross- section of armour mm ²	Nominal outer diameter mm	Approximate weight kg/km	Current Rating A at +45°C	Min. bending radius fixed installation mm
Normal	G-type						
628668	628669	7x2,5	8,5	16,5	430	16	100
628725	628726	10x2,5	11,5	21,0	600	14	125
628672	628673	12x2,6	11,5	21,5	675	13	130
628729	628730	14x2,5	11,8	23,0	780	13	140
628733	628734	16x2,5	12,5	24,5	865	12	145
628676	628677	19x2,5	13,2	25,5	980	11	155
628680	628681	24x2,5	15,7	30,0	1240	10	180
628686	628687	27x2,5	16,1	30,5	1350	10	185
-	-	30x2,5	16,7	32,0	1470	10	190
628688	628689	37x2,5	18,1	34,5	1775	9	205



© Arctia Ltd.